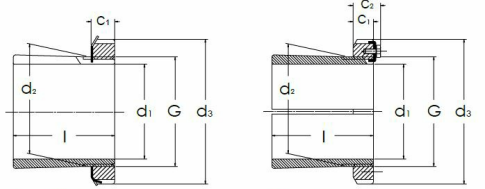




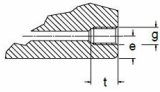
H 3052 H

Adapter sleeves with metric dimensions

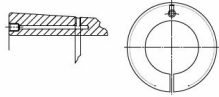
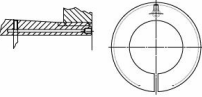


H + MB/MBL
Kegel 1:12
(Kegel 1:30 bei H240, H241)

H + MS
Kegel 1:12
(Kegel 1:30 bei H240, H241)

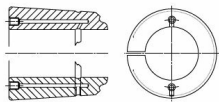
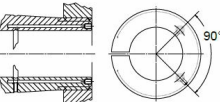


H .. H
H .. HS



H .. HK
H .. HKS

H .. HB
H .. HBS



H .. HKB
H .. HKBs

Technical data

d1 (mm)	240
d2 (mm)	260
l (mm)	145
d3 (mm)	310
G	Tr 260X4
c1 (mm)	34
c2 (mm)	46
g	M 6
e (mm)	4.2
t (mm)	9
Weight (kg)	15.3

GTIN/EAN



Related products

HM 3052
Locknuts with trapezoidal threads

MS 3048
Locking clips with screws