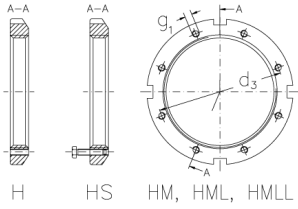


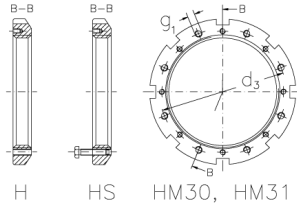


HML 126 TH

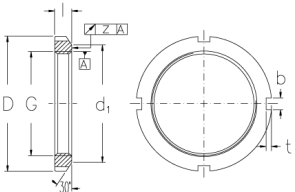
Muttern mit Trapezgewinde



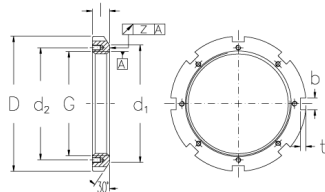
H HS HM, HML, HMLL



H HS HM30, HM31



HM, HML, HMLL



HM30, HM31

Technische Daten

G	Tr 630x6
l (mm)	65
D (mm)	730
d1 (mm)	690
d2 (mm)	-
b (mm)	45
t (mm)	20
z (mm)	0,15
g1	M16
d3 (mm)	652
Gewicht (kg)	51,5