

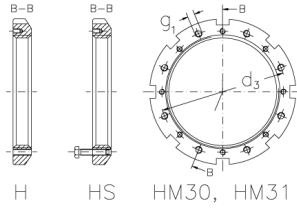


# HM 116 TH

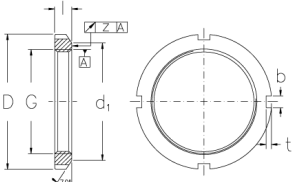
Muttern mit Trapezgewinde



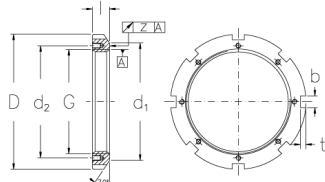
H HS HM, HML, HMLL



H HS HM30, HM31



HM, HML, HMLL



HM30, HM31

## Technische Daten

G	Tr 580x6
l (mm)	65
D (mm)	700
d1 (mm)	645
d2 (mm)	-
b (mm)	40
t (mm)	23
z (mm)	0,15
g1	M24
d3 (mm)	612
Gewicht (kg)	55,7