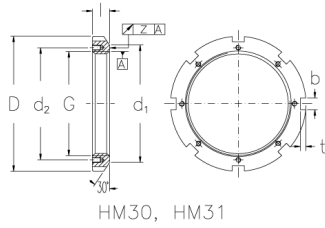
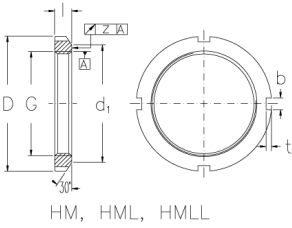
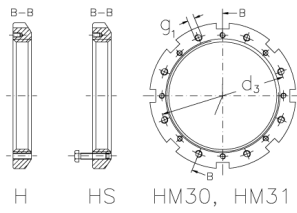
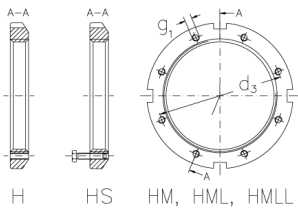




# HMLL 116 THS

Muttern mit Trapezgewinde



## Technische Daten

G	Tr 580x6
l (mm)	47
D (mm)	660
d1 (mm)	630
d2 (mm)	-
b (mm)	32
t (mm)	15
z (mm)	0,15
g1	M12
d3 (mm)	598
Gewicht (kg)	28,1