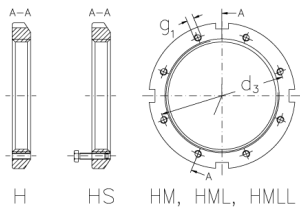


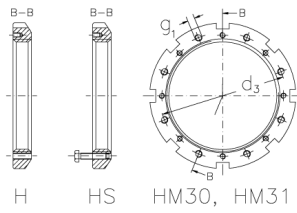


HMLL 110 THS

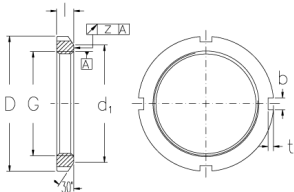
Muttern mit Trapezgewinde



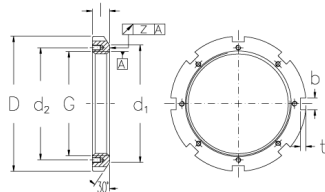
H HS HM, HML, HMLL



H HS HM30, HM31



HM, HML, HMLL



HM30, HM31

Technische Daten

G	Tr 550x6
l (mm)	47
D (mm)	625
d1 (mm)	595
d2 (mm)	-
b (mm)	32
t (mm)	15
z (mm)	0,15
g1	M12
d3 (mm)	568
Gewicht (kg)	24,9