

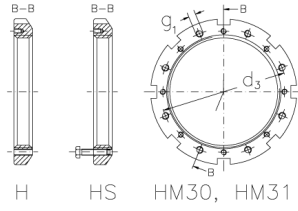


HMLL 104 T

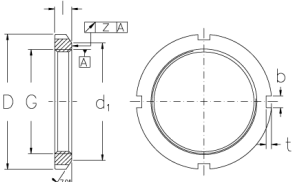
Muttern mit Trapezgewinde



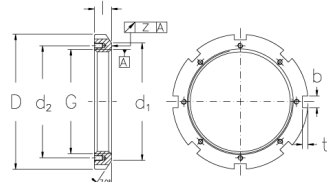
H HS HM, HML, HMLL



H HS HM30, HM31



HM, HML, HMLL



HM30, HM31

Technische Daten

G	Tr 520x6
l (mm)	42
D (mm)	595
d1 (mm)	565
d2 (mm)	-
b (mm)	32
t (mm)	15
z (mm)	0,15
g1	-
d3 (mm)	-
Gewicht (kg)	20,8