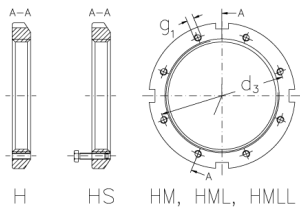


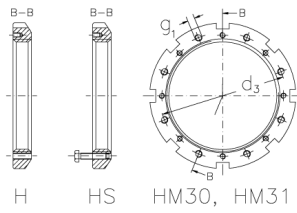


# HMLL 100 THS

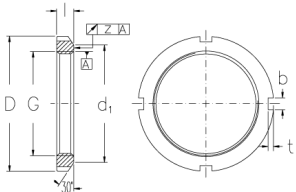
Muttern mit Trapezgewinde



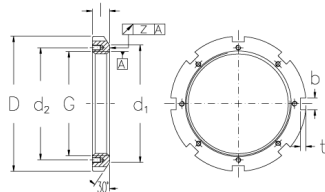
HM, HML, HMLL



HM30, HM31



HM, HML, HMLL



HM30, HM31

## Technische Daten

G	Tr 500x5
l (mm)	37
D (mm)	575
d1 (mm)	547
d2 (mm)	-
b (mm)	32
t (mm)	15
z (mm)	0,15
g1	M12
d3 (mm)	518
Gewicht (kg)	17,9