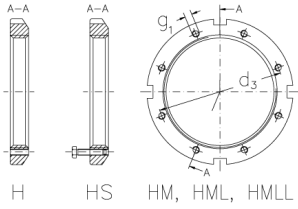


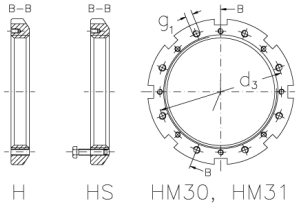


# HML 98 TH

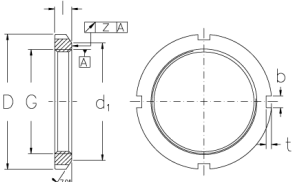
Muttern mit Trapezgewinde



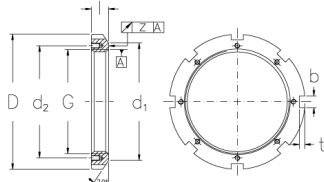
H HS HM, HML, HMLL



H HS HM30, HM31



HM, HML, HMLL



HM30, HM31

## Technische Daten

G	Tr 490x5
l (mm)	45
D (mm)	570
d1 (mm)	540
d2 (mm)	-
b (mm)	36
t (mm)	15
z (mm)	0,15
g1	M12
d3 (mm)	507
Gewicht (kg)	22,2

GTIN/EAN

