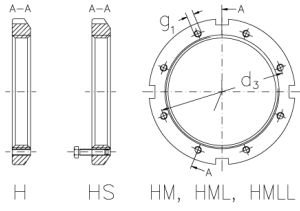


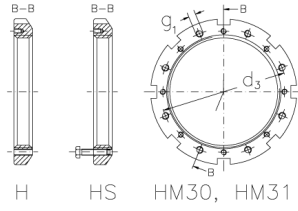


# HMLL 87 T

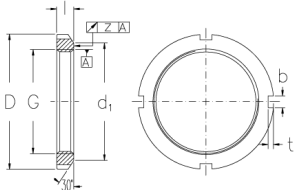
Muttern mit Trapezgewinde



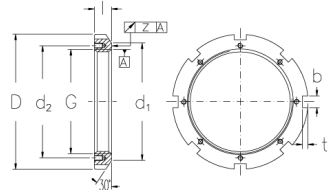
H HS HM, HML, HMLL



H HS HM30, HM31



HM, HML, HMLL



HM30, HM31

## Technische Daten

G	Tr 435x5
l (mm)	30
D (mm)	500
d1 (mm)	474
d2 (mm)	-
b (mm)	28
t (mm)	13
z (mm)	0,15
g1	-
d3 (mm)	-
Gewicht (kg)	10,7

GTIN/EAN

