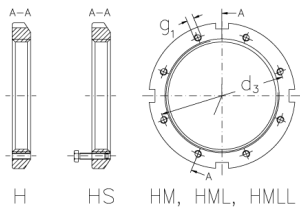


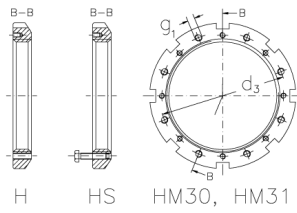


HMLL 79 THS

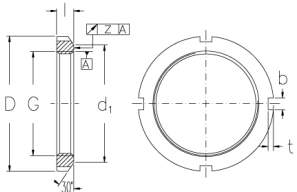
Muttern mit Trapezgewinde



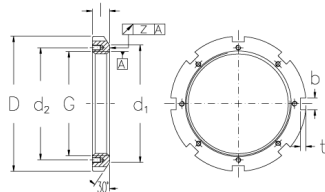
H HS HM, HML, HMLL



H HS HM30, HM31



HM, HML, HMLL



HM30, HM31

Technische Daten

G	Tr 395x5
l (mm)	30
D (mm)	460
d1 (mm)	436
d2 (mm)	-
b (mm)	24
t (mm)	12
z (mm)	0,12
g1	M12
d3 (mm)	412
Gewicht (kg)	10,7