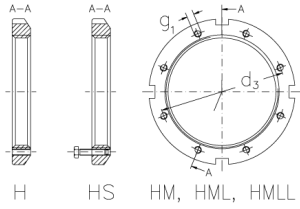


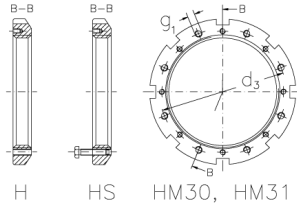


# HMLL 75 THS

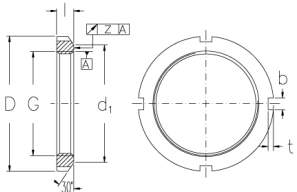
Muttern mit Trapezgewinde



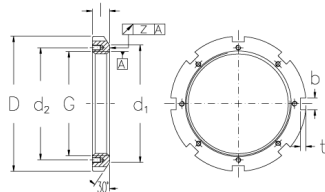
H HS HM, HML, HMLL



H HS HM30, HM31



HM, HML, HMLL



HM30, HM31

## Technische Daten

G	Tr 375x5
l (mm)	28
D (mm)	430
d1 (mm)	406
d2 (mm)	-
b (mm)	24
t (mm)	12
z (mm)	0,12
g1	M10
d3 (mm)	390
Gewicht (kg)	7,4