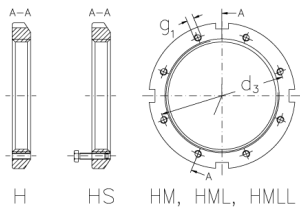


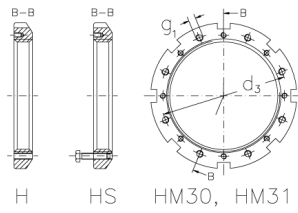


HMLL 75 T

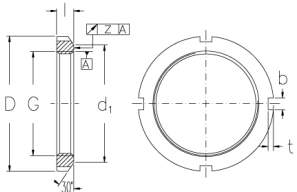
Muttern mit Trapezgewinde



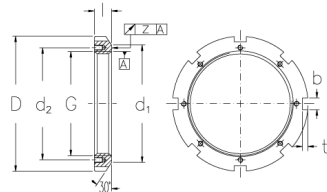
H HS HM, HML, HMLL



H HS HM30, HM31



HM, HML, HMLL



HM30, HM31

Technische Daten

| | |
|--------------|----------|
| G | Tr 375x5 |
| l (mm) | 28 |
| D (mm) | 430 |
| d1 (mm) | 406 |
| d2 (mm) | - |
| b (mm) | 24 |
| t (mm) | 12 |
| z (mm) | 0,12 |
| g1 | - |
| d3 (mm) | - |
| Gewicht (kg) | 7,3 |