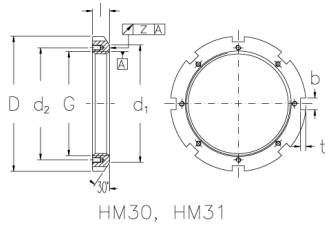
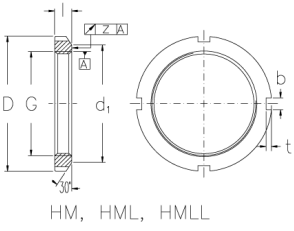
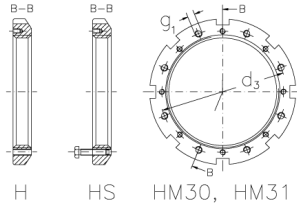




# HM 66 TH

Muttern mit Trapezgewinde



## Technische Daten

|              |          |
|--------------|----------|
| G            | Tr 330x5 |
| l (mm)       | 40       |
| D (mm)       | 410      |
| d1 (mm)      | 380      |
| d2 (mm)      | -        |
| b (mm)       | 28       |
| t (mm)       | 15       |
| z (mm)       | 0,12     |
| g1           | M16      |
| d3 (mm)      | 352      |
| Gewicht (kg) | 13,4     |