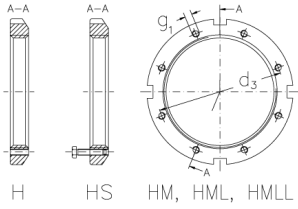


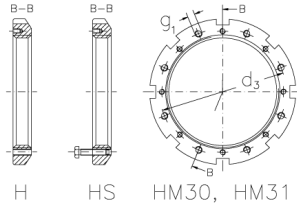


HML 64 T

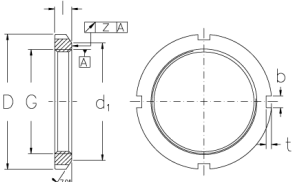
Muttern mit Trapezgewinde



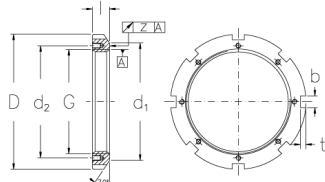
H HS HM, HML, HMLL



H HS HM30, HM31



HM, HML, HMLL



HM30, HM31

Technische Daten

G	Tr 320x5
l (mm)	32
D (mm)	380
d1 (mm)	356
d2 (mm)	-
b (mm)	24
t (mm)	12
z (mm)	0,12
g1	-
d3 (mm)	-
Gewicht (kg)	7,97

GTIN/EAN

