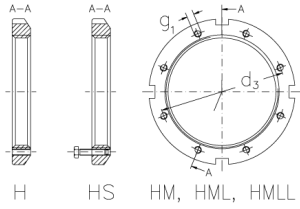


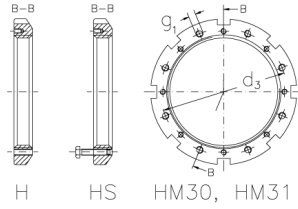


# HML 60 THS

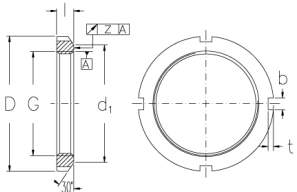
Muttern mit Trapezgewinde



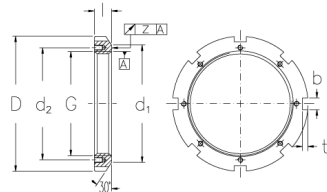
H HS HM, HML, HMLL



H HS HM30, HM31



HM, HML, HMLL



HM30, HM31

## Technische Daten

G	Tr 300x4
l (mm)	31
D (mm)	360
d1 (mm)	336
d2 (mm)	-
b (mm)	24
t (mm)	12
z (mm)	0,12
g1	M12
d3 (mm)	317
Gewicht (kg)	10,6