

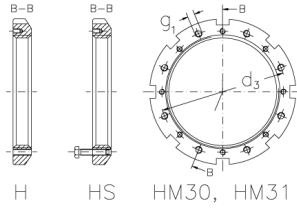


# HML 56 T

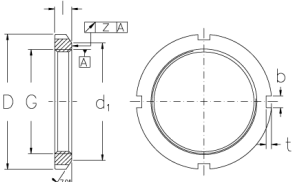
Muttern mit Trapezgewinde



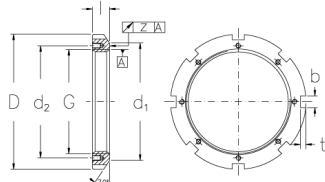
H HS HM, HML, HMLL



H HS HM30, HM31



HM, HML, HMLL



HM30, HM31

## Technische Daten

G	Tr 280x4
l (mm)	30
D (mm)	330
d1 (mm)	310
d2 (mm)	-
b (mm)	24
t (mm)	10
z (mm)	0,12
g1	-
d3 (mm)	-
Gewicht (kg)	5,49

GTIN/EAN

