

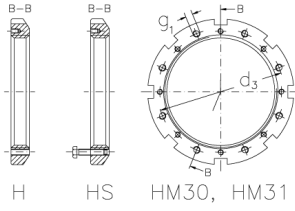


HMLL 50 T

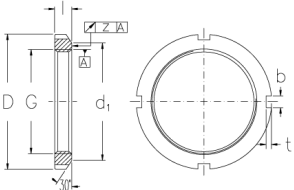
Muttern mit Trapezgewinde



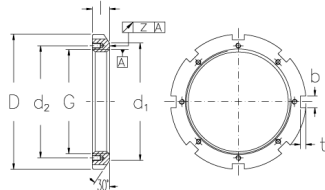
HM, HML, HMLL



HM30, HM31



HM, HML, HMLL



HM30, HM31

Technische Daten

G	Tr 250x4
l (mm)	26
D (mm)	290
d1 (mm)	274
d2 (mm)	-
b (mm)	18
t (mm)	8
z (mm)	0,12
g1	-
d3 (mm)	-
Gewicht (kg)	3,4