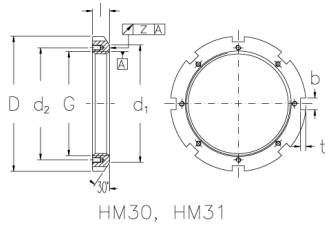
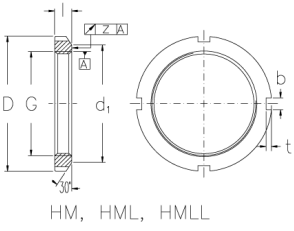
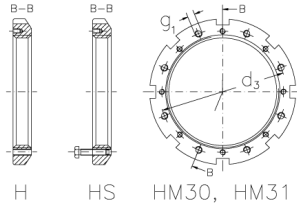




# HMLL 42 T

Muttern mit Trapezgewinde



## Technische Daten

G	Tr 210x4
l (mm)	26
D (mm)	250
d1 (mm)	234
d2 (mm)	-
b (mm)	18
t (mm)	8
z (mm)	0,12
g1	-
d3 (mm)	-
Gewicht (kg)	2,9